

HEAVY DUTY

# INDUSTRIAL MIXER



● ● ●  
BITLER Heavy Duty Industrial Mixer is a powerful and versatile mechanical device designed for blending, mixing, and homogenizing various substances on a large scale within industrial settings.



High Durability



Best Technology



Heavy Duty Product



[www.indotara.co.id](http://www.indotara.co.id)

**Twin-Shaft Mixer - BHS SERIES**

**01**

**04**

**Double-Shaft Mixer - BSW SERIES**

**Asphalt Mixer - AMS SERIES**

**06**

**07**

**Twin-Shaft Laboratorial Mixer - BSS SERIES**

**One-Shaft Mixer - BDW SERIES**

**08**

**09**

**High-Pressure Washer - BHPW SERIES**

**Intensive Mixer - BR/BD SERIES**

**10**

**11**

**Intensive Mixer - BR/BEL SERIES**

**Mixer Configuration - BMP SERIES**

**15**

**18**

**Mixer Configuration - BMPS SERIES**

**Mixer Configuration - BMPH SERIES**

**20**

**22**

**Ribbon Mixer - BRM SERIES**

# TWIN-SHAFT MIXER

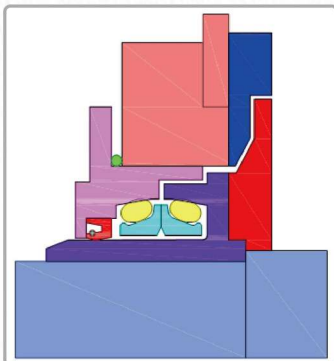
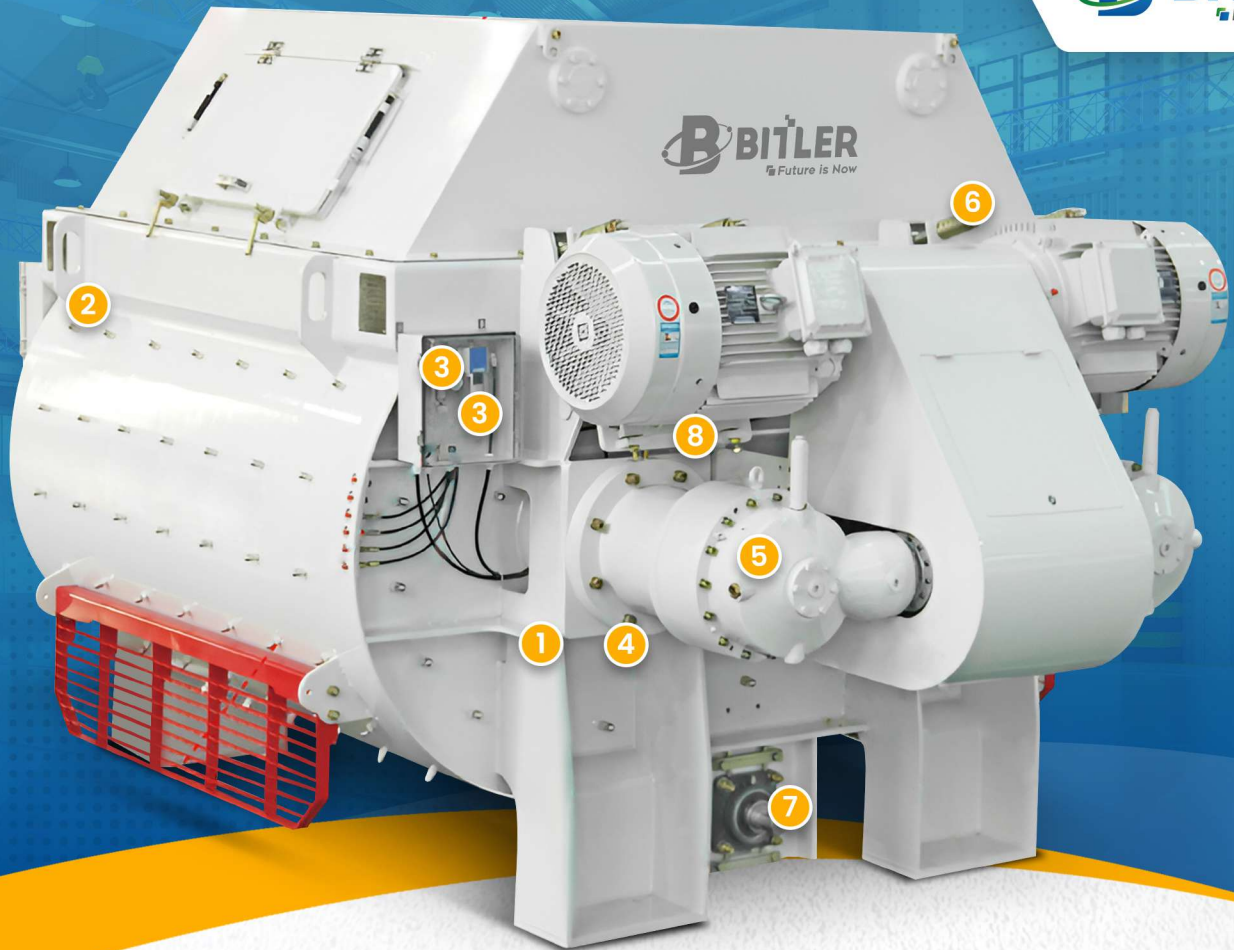
TYPE : BHS SERIES



- ▶ Advanced Technology
- ▶ High Durability ▶ Heavy Duty Product

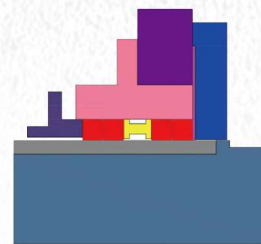
Product Specification

Model	Input Capacity	Output Capacity	Mixer Power	Hydraulic Power	Paddles Number	Weight	Dimension
BHS750	1125 L	750 L	30 KW	3 KW	2*4 Pieces	4200 Kg	2800x2180x1970 mm
BHS1000	1500 L	1000 L	37 KW	3 KW	2*5 Pieces	4700 Kg	3000x2180x1970 mm
BHS1250	1875 L	1250 L	22x2 KW	3 KW	2*5 Pieces	5000 Kg	3000x2180x1970 mm
BHS1500	2250 L	1500 L	30x2 KW	3 KW	2*6 Pieces	5400 Kg	3200x2180x1970 mm
BHS2000	3000 L	2000 L	37x2 KW	3 KW	2*6 Pieces	7800 Kg	3400x2600x2265 mm
BHS2500	3750 L	2500 L	45x2 KW	3 KW	2*7 Pieces	8300 Kg	3640x2600x2265 mm
BHS3000	4500 L	3000 L	55x2 KW	3 KW	2*8 Pieces	8900 Kg	3880x2600x2265 mm
BHS3500	5250 L	3500 L	55x2 KW	3 KW	2*9 Pieces	9500 Kg	4100x2600x2265 mm
BHS4000	6000 L	4000 L	75x2 KW	3 KW	2*9 Pieces	12000 Kg	4200x2950x2450 mm
BHS4500	6750 L	4500 L	75x2 KW	3 KW	2*10 Pieces	14000 Kg	4480x2950x2450 mm
BHS5000	7500 L	5000 L	90x2 KW	3 KW	2*11 Pieces	16000 Kg	4760x2950x2450 mm
BHS6000	9000 L	6000 L	110x2 KW	3 KW	2*12 Pieces	18000 Kg	5040x2950x2450 mm



### 1. Shaft Sealing Standard

- Adopt floating seal ring and labyrinth seal structure of mechanical seal, can prevent sand or stone into the seal.
- There is wear protection board in the mechanical seal, It can ensure the sealing system enduring stable. The material is not close to the shaft head. Prolong the service life seal.
- Split assembly, easy to remove & replace.



### Air Mist Lubricated Self - Sealing Shaft

- Adopt original imported sealing material, long service life.
- Adopt multiple seal structure, seal more reliable.
- Oil level alarm.
- Realize unattended operation mode.
- Running cost is lower without the oil pump.



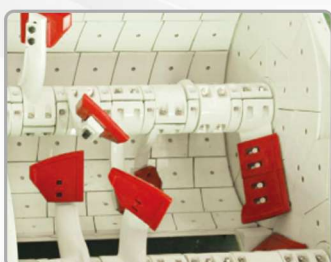
### 2. Mixing Tool Standard

- Using patent design of mixing device can get high material homogeneity.
- Streamline arms, mixing resistance is small, less likely to hold shaft.



### Twin Spiral

- The spiral blade can increase the mixing efficiency 15%, energy saving 15%, mix material more homogeneous.
- Reduce the running resistance, low holding shaft rate.



### Large Aggregate Mixing Device

- Maximum aggregate can be 160 mm.
- Mainly used in hydraulic industries and waste treatment industries.



### 3. Shaft Seal Lubrication

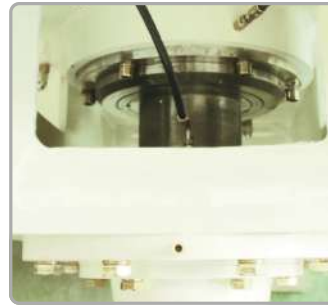
#### Automatic Grease Lubrication

- Four cores grease pump. Independent oil supply. Easy to maintenance. output
- high pressure grease. High viscosity grease. small grease consumption.



### Automatic Air Mist Lubrication

- Lubrication oil atomized by the compressed air, It makes lubrication effect very good.
- Independent air pressure detection and voice prompt function at shaft end.
- No lubrication oil goes into material. No pollution to the environmental with zero-emission.



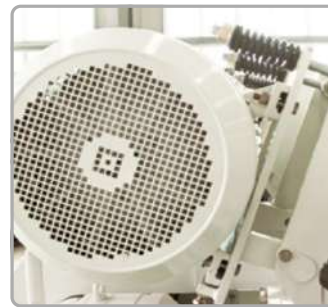
### 4. Shaft Bearing

- Shaft bearing and sealing are separate. Can protect the bearing when the sealing is broken.
- Easy to replace.



### 5. Gearbox

Bitler Twin Shaft Mixer has Stable transmission, low noise, long service life, no oil leakage.



### 6. Belt Self-Tensioning Device

- Avoid belt abnormal wear and damage.
- Reduce maintenance costs.



### 7. Discharge Door & Large Discharge Door

- Eccentric discharge door, modular design, reliable sealing, wear small.
- Durable and reliable limit switch.



- Large opening design for quick discharge.
- Hydraulic drive, open and close more reliable.
- With the signal of position of the door, control facility.
- Without dead angle discharge structure, more uniform mixing.
- Especially suit the UHPC and dry concrete.
- With wear-resisting liner, long service life.
- Double discharge door, suit product the PC concrete.



### 8. Hydraulic System Protect

- Protect the hydraulic and lubricate system, feel free to use.
- With air spring equipment, easy open and close.
- With transparent glass window, best visibility.



### 9. Humanization Design

- Double step, conform to the ergonomics.
- With maintenance ladder, facility to access mixer.
- With the nylon cover on the maintenance port, prevent sticky concrete.



### 10. Intelligent Internet

- Maintenance tips,
- Fault alarm.
- GPS positioning, Wechat push.



# DOUBLE SHAFT MIXER

TYPE : BSW SERIES



- ▶ Advanced Technology
- ▶ High Durability ▶ Heavy Duty Product

Product Specification

Model	Input Capacity	Working Capacity	Load Weight	Mixing Power	Weight
BSW2000	2000 L	800~1200 L	800~1200 Kg	11 x 2 KW	2800 Kg
BSW3000	3000 L	1200~1800 L	1200~1800 Kg	15 x 2 KW	3600 Kg
BSW4000	4000 L	1600~2400 L	1600~2400 Kg	22 x 2 KW	4000 Kg
BSW6000	6000 L	2400~3600 L	2400~3600 Kg	30 x 2 KW	6100 Kg
BSW8000	8000 L	3200~4800 L	3200~4800 Kg	37 x 2 KW	7400 Kg
BSW10000	10000 L	4000~6000 L	4000~6000 Kg	45 x 2 KW	8000 Kg
BSW12000	12000 L	4800~7200 L	4800~7200 Kg	55 x 2 KW	9100 Kg
BSW15000	15000 L	6000~9000 L	6000~9000 Kg	75 x 2 KW	11000 Kg



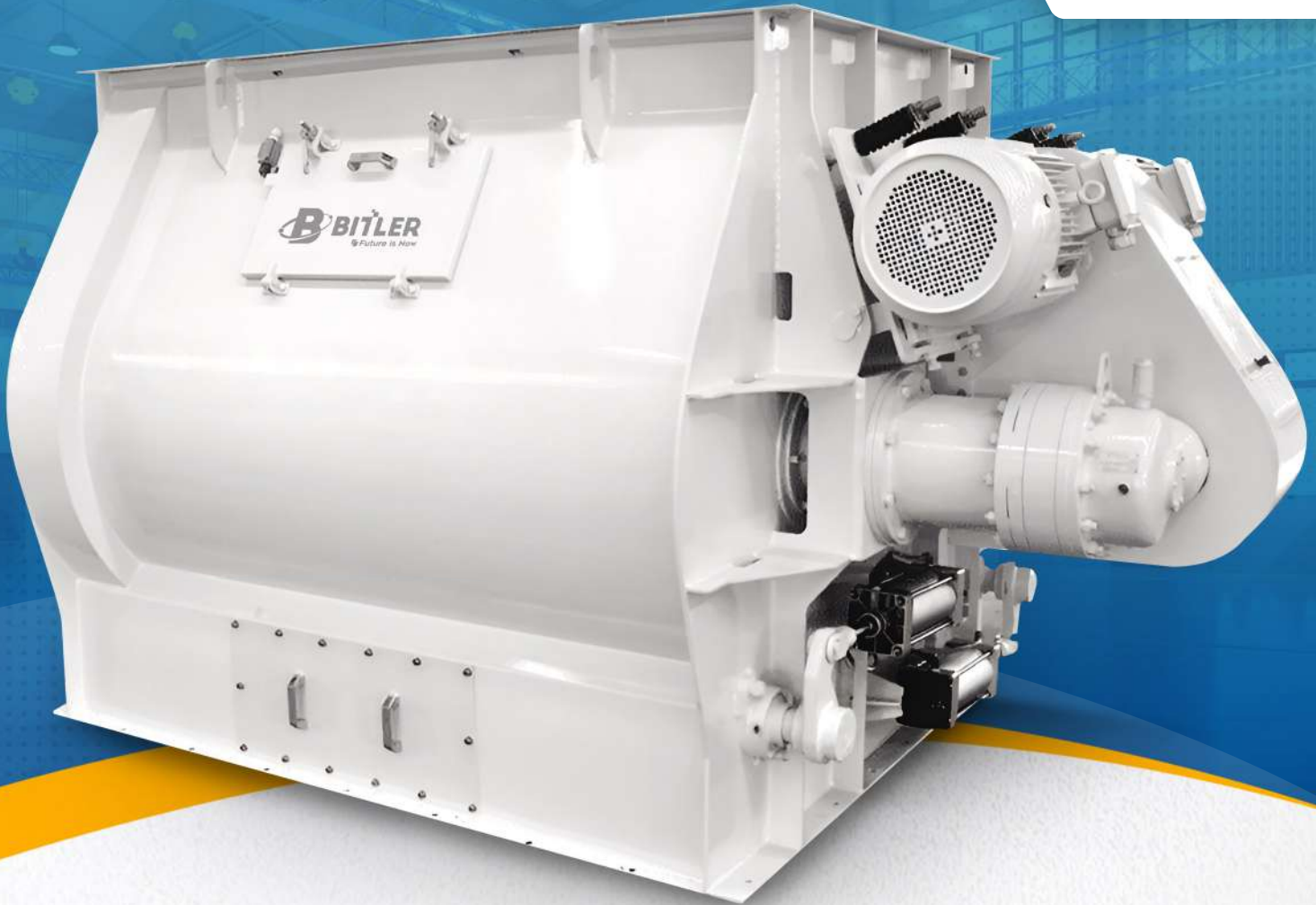
### 1. Drive Device

Use the planetary gearbox, smooth transmission, low noise, long service life, no oil leakage.



### 2. Belt Self-Tensioning Device

- Can avoid belt abnormal wear and damage.
- Can reduce the labor intensity of maintenance personnel, and to reduce maintenance costs.



### 3. Mixing Device

- Twin-shaft design, Mixing arm structure easy to tear open outfit, easy to repair and replacement.
- Helix arrangement of stirring arm stir in the structure of the blade knife, effectively improve the material qualitative. Easy cleaning to all internal parts of the Mixer.



### 4. Discharge Door

Discharging door adopts the patent technology of double door design, dual cylinder to drive, fully sealed structure, no leakage, removable replacement discharging door, easy to maintain.



### 5. Air Control Case

Gas path components placed centrally, safe, convenient and beautiful.



### 6. Coultter Device (Option)

Fly knife device adopts the patent technology of ultra compact structure, double seal design, collocation of wear-resistant alloy, cooperate with the stirring knife operation can make rapid mixing material, at the same time can effectively disperse fibre materials and other means.



### 7. Working Sample Device

Sampler adopts pneumatic device, the mixing materials can be real-time sampling inspection, to determine the optimal mixing time, ensure the quality of mixing.



Advanced Technology



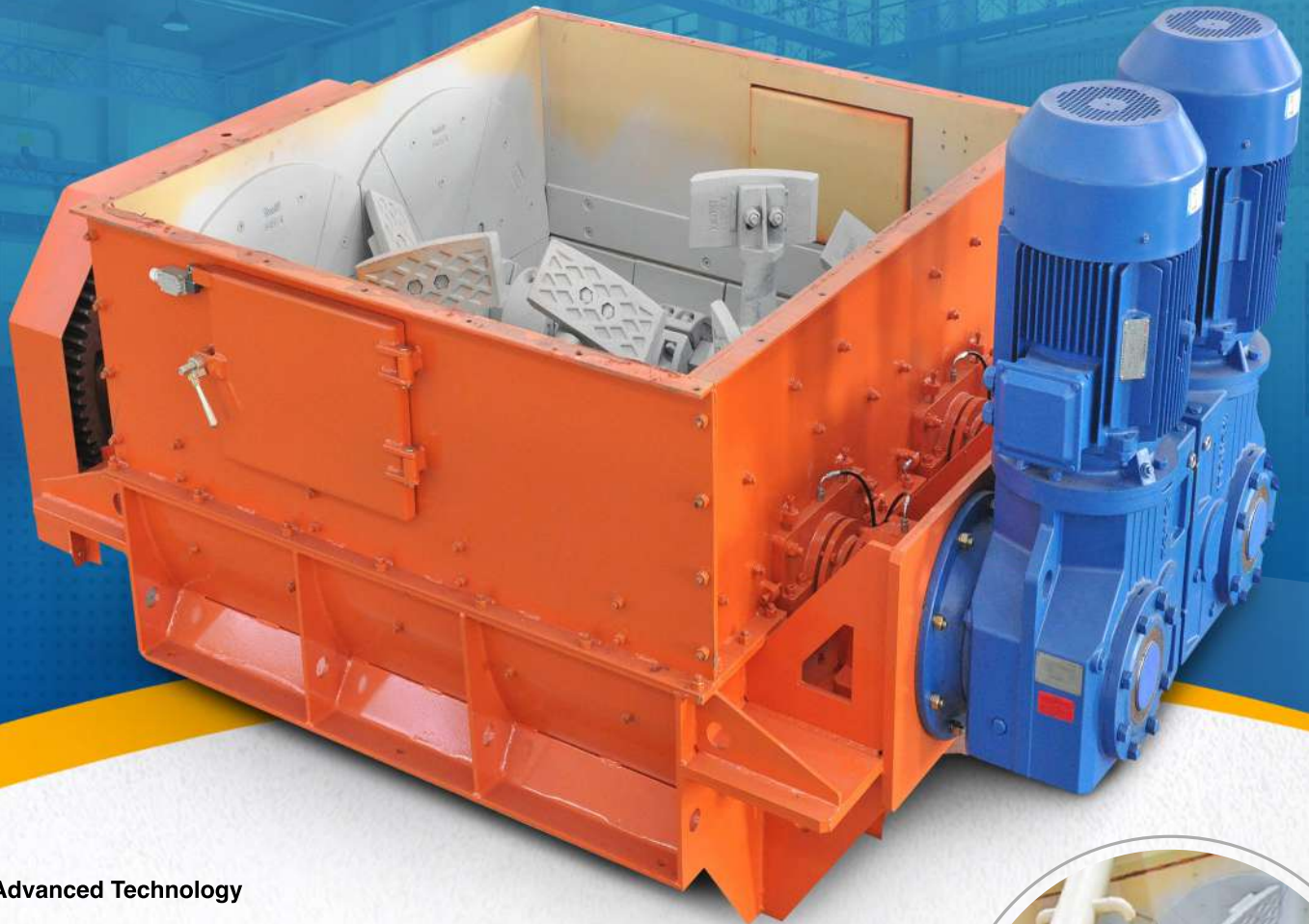
High Durability



Heavy Duty Product

# ASPHALT MIXER

**TYPE : AMS SERIES**



- ▶ **Advanced Technology**
- ▶ **High Durability** ▶ **Heavy Duty Product**

- Suitable for all kinds of hot mix, warm mix and recycled asphalt concrete mixing requirements.
- Using large size flip unloading door, using cylinder driven mixing no dead Angle, fast unloading speed.
- The unloading door is equipped with a heating and insulation system to effectively avoid the problem of adhesive material on the unloading door.
- Mixing scraper and lining plate are made of high chromium wear-resisting alloy, with strong wear resistance.
- Special high temperature resistant shaft end seal design, and equipped with automatic lubrication system, long service life, no manual maintenance.
- Adopt hard tooth surface, industrial reducer and open synchronous gear design, the mixer tank adopts split design, which is easier to maintain the mixer.



### Product Specification

Model	AMS1000	AMS1200	AMS1500	AMS2000	AMS2500	AMS3000	AMS4000
Item							
Stirring Capacity	1000 Kg	1200 Kg	1500 Kg	2000 Kg	2500 Kg	3000 Kg	4000 Kg
Mixing Power	2 x 15 KW	2 x 18.5 KW	2 x 22 KW	2 x 30 Kw	2 x 37 KW	2 x 45 KW	2 x 55 KW
Rotating Speed	53 RPM	54 RPM	55 RPM	45 RPM	45 RPM	45 RPM	45 RPM
Weight (T)	3.2 T	3.8 T	4.1 T	6.8 T	7.5 T	8.2 T	9.5 T



# TWIN-SHAFT LABORATORIAL MIXER

TYPE : BSS SERIES

- Advanced Technology
- High Durability
- Heavy Duty Product



- Small footprint, easy to move and resettlement.
- The agitator design is unique can install and disassemble easily and quickly.
- The shaft sealing is composed of floating oil seal ring and mechanical seal ensure reliable work, longer service life, and easy to disassemble and replace.
- Frequency conversion control system, intuitive operation, accurate and reliable experimental data.
- Rich configuration, with pneumatic and manual discharge functions.

## Product Specification

Model	Output Capacity	Input Capacity	Output Weight	Mixing Power	Mixer Blade
BSS60	60 L	90 L	144 Kg	4 KW	5*2
BSS90	90 L	130 L	216 Kg	5.5 KW	6*2
BSS150	150 L	225 L	360 Kg	7.5 KW	6*2

# ONE SHAFT MIXER

TYPE : **BDW SERIES**

- ▶ Advanced Technology
- ▶ High Durability
- ▶ Heavy Duty Product



- Small footprint, easy to move and resettlement.
- Different kinds of mixing paddles and plough type stirring device ensure low agitation resistance, high uniformity.
- The shaft sealing is made of fiber packing can improve sealing performance and service life. It can be removed and replaced easily.
- Frequency conversion control system, intuitive operation, accurate and reliable experimental data.
- Pneumatic large discharging door with silicon soft sealing material can quickly discharge materials and ensure leak-tightness.
- Visual observation gate can safely control during the working process.

## Product Specification

Model	Total Capacity	Working Capacity	Working Weight	Mixing Power	Mixer Blade
BDW100	100 L	40~60 L	60~90 Kg	3 KW	5
BDW200	200 L	80~120 L	80~120 Kg	4 KW	6
BDW300	300 L	120~180 L	120~180 Kg	5.5 KW	6

# HIGH PRESSURE WASHER

TYPE : BHPW SERIES



- Original imported plunger pump with super high pressure can clean quickly.
- Fully automatic backwash filter effectively extend the service life.
- Wireless remote control the start-stop function of cleaning station.
- Water storage tank with bottom water level protection function.
- PLC+ touch screen design can enjoy man-machine interactive control.

**Product Specification**

Model	Power	Working Pressure	Flux	Water Tank Capacity	Weight
BHPW1200	22 KW	50 MPa	21 L/min	80 L	380 Kg
BHPW1200A	22 KW	50 MPa	21 L/min	-	320 Kg

# INTENSIVE MIXER

TYPE: BR/BD SERIES

- Advanced Technology
- High Durability
- Heavy Duty Product

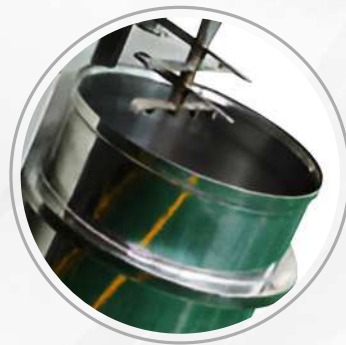


- Unique mixing principle of the BR series Intensive mixers ensure constant, reproducible product quality with minimal mixing times for batch operations.
- While the mixing device is rotating at high speed, the drum is driven by the reducer to rotate, and the mixing drum is tilted.
- It is inclined at a certain angle to realize a three-dimensional stirring mode, so that the material is turned more violently and the mixing is more uniform. The mixing direction is divided into forward and reverse.

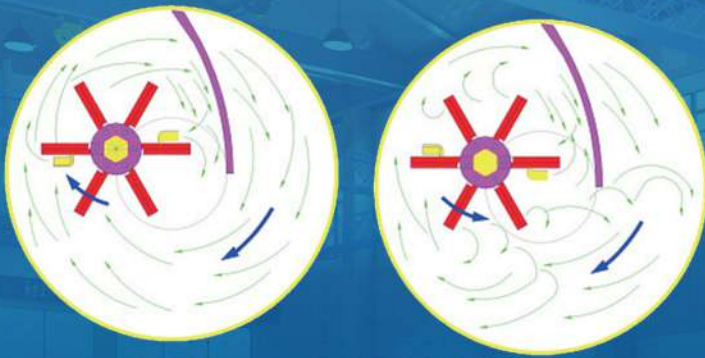
# INTENSIVE MIXER

TYPE : BR/BEL SERIES

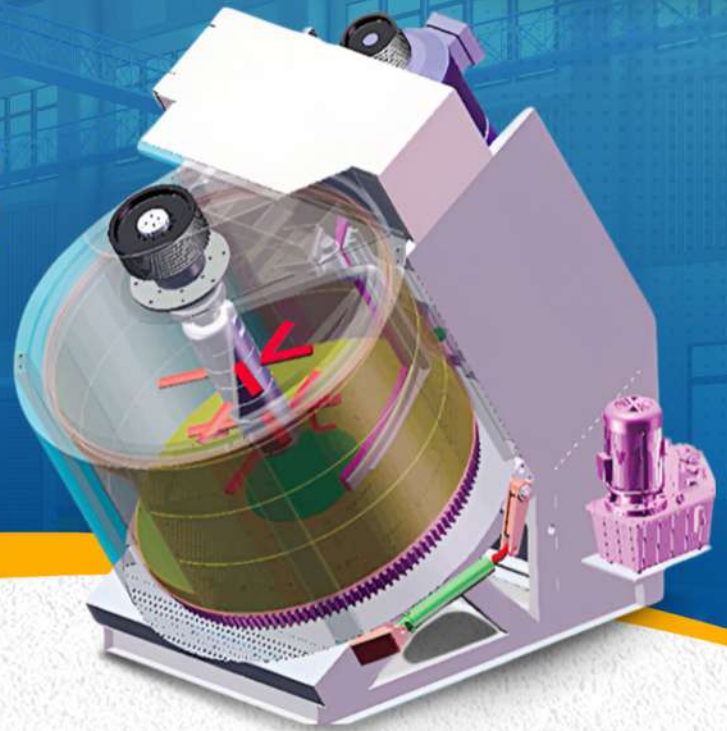
Advanced Technology   
High Durability   
Heavy Duty Product 



- BEL series Intensive mixer sizes from 1 to 10 liters are available.
- BR series Intensive mixer sizes from 5 to 50 liters are available.
- Flexible high-performance mixing system for challenging tasks in the fields of research, development and small-scale production.
- The multi-functional mixing system can be used for many different applications, e.g. for mixing, granulating, coating, kneading, dispersing, dissolving, defibering and many more.
- Industrial scale-up of test results is possible.



Intensive mixer can be design according to countercurrent principle or cross flow principle.



- The mixer can drive the trough move together. At the same time, the mixing device can cut material. In the complex mixing , can getvery good mixing effect.
- In the turning mixing trough, material be pushed the scraper. Then turn over. That promote the mixing up and down.
- Mixing blade can strip the material at the bottom and side of mixer. Can shorten the discharging time.

**Product Specification**

Model	Output Capacity	Output Weight	Mixing Device	Paddle
BEL5	5 L	6 Kg	1	1
BEL10	10 L	12 Kg	1	1
BR02	5 L	6 Kg	1	1
BR04	10 L	12 Kg	1	1
BR05	25 L	30 Kg	1	1
BR08	50 L	60 Kg	1	1
BR09	100 L	120 Kg	1	1
BRV09	150 L	180 Kg	1	1
BR11	250 L	300 Kg	1	1
BR15	350 L	420 Kg	1	1
BRV15	500 L	600 Kg	1	1
BRV15H	600 L	720 Kg	1	1
BR19	750 L	900 Kg	1	1
BRV19	1000 L	1200 Kg	1	1
BR20	1250 L	1500 Kg	1	1
BR24	1500 L	1800 Kg	1	1
BRV24	2000 L	2400 Kg	1	1



### 1. Gearing System

It can be selected for different demand of power, revolutions, direction of rotation and energy transfer mode according to the task. Friction gear or ring gear driven mixing drum.

The motor drive the gearbox by vee belt Then the gearbox drive the mixing device.



### 2. Mixing Device

While the material rotating with the mixing drum, a force generated between the mixing drum and the mixing device that is rotating the same direction in the centrifugal position. The wolfram carbide compounded liner ensures a durable quality and an easy maintaining. The shape and quantity of the mixing blade depends on the material to mix. The blades are also easy to replace.



### 3. Maintaining Door

On the consideration of personnel safety and to the market demand, we adopt reliable high-sensitive security switches to be equipped on the maintaining door. There is an observing port on the maintaining door, observing is possible without cutting off the power.



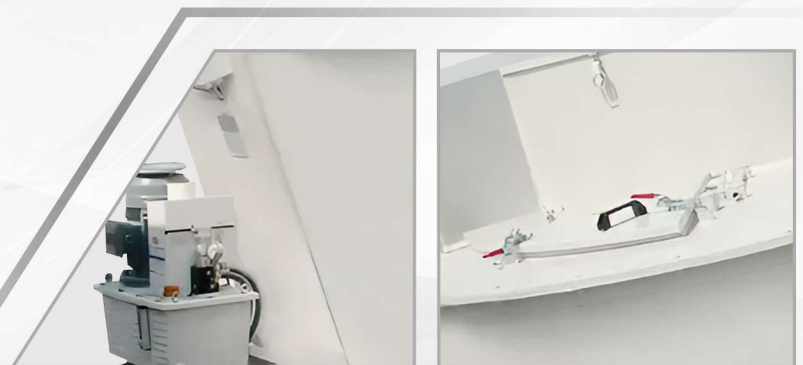
### 4. Wear-Resistance Liner

The stirring materials are abrasion and corrosiveness to the structural parts in the internal contact of the cylinder. Our company has targeted choice of the wear-resistant parts. The inner lining of the stirring materials and the stirring barrel is: wear-resistant alloy liner, ceramic liner, surfacing liner, stainless steel liner and vulcanized rubber liner with higher molecular material.



### 5. Discharging Device

BITLER Intensive has a special sealing device installed on the drain gate, the function of this special device is to prevent leaks.



**Wear Resistance Liner/Blade**

Because the mixed material is abrasive to the structural parts it comes into contact with, the choice of materials for these structural parts must be targeted, and Konecranes provides a reliable choice for wear-resistant materials.



- High-quality steel as structural material
- Carbide coating
- Non-ferrous metals
- Vulcanized rubber lining and specialty plastics
- Carbide cladding
- Ceramic material
- PTFE, Viton and other sealing materials
- High-grade alloy steel

**High Pressure Washing**



**Automation & Temperature Check**

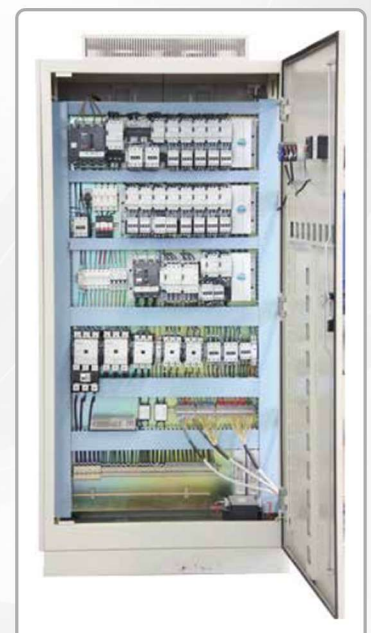


**Security Lock**



**Control System**

We provide two modes of control system. The first mode consists of industrial computer, weighers, control cabinet and high voltage cabinet. The second mode is made up of PLC, touch screen, weighers, and control cabinet. Both modes adopts man-machine interface, menu options, full automatic control of material ratio. Multiply display of different working process makes it easy to monitor and manage production. Easy operation owes to the beautiful outline design and humanized control method. All electrical components are from famous foreign brands to ensure the stability of the system. The control system has a wide application. Each weigher signal collected by independent weighing instrument, transferred by serial communications to specialize computer control board collecting external digital signals and realizes automatic production. High precision, strong anti-jamming capability. Besides, customized services are provided





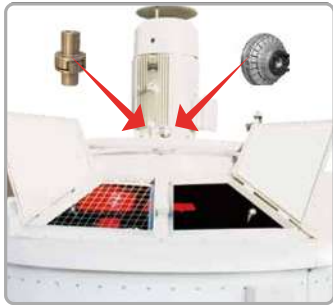
# MIXER CONFIGURATION

TYPE: **BMP SERIES**

- ▶ **Advanced Technology**
- ▶ **High Durability** ▶ **Heavy Duty Product**

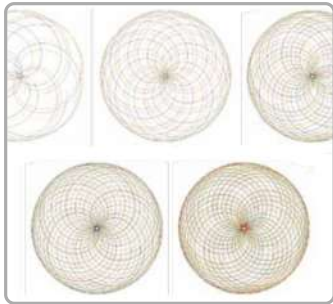
Compact construction. Steady driving.  
Original mode. Excellence performance.  
Long operating life. With low investment and  
operational costs. Easy to install and maintain.  
No leakage problem. Leading products.





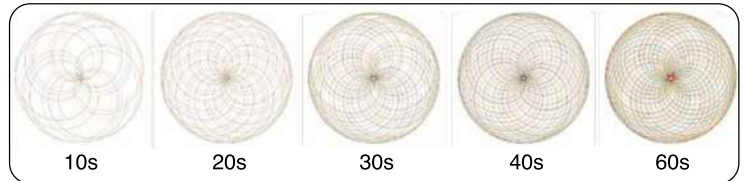
### 1. Gear System

Driving system consists of motor and hardened surface gear which is specialized designed by BITLER. Flexible coupling and hydraulic coupling(option) connects motor and gearbox. The gearbox is designed by absorbing European advanced technology. The improved model has lower noise, longer torque and more durable. Even in strict production conditions, the gearbox can distribute power effectively and evenly to each mix end device, ensuring normal operation, high stability and low maintenance.



### 2. Motion Track

The revolution and rotation speed of the blades have been extensively studied and tested to give the mixer a high output without causing the segregation of materials with different grain size and weight. The movement of the material inside the trough is smooth and continuous. As shown in the picture, the blades track covers the whole bottom of the trough after a cycle.



### 3. Observing Port

There is an observing port on the maintaining door. You can observe the mixing situation without cutting off power.



### 4. Mixing Device

Compulsory mixing is realized by composite moves of extruding and overturning driven by rotating planets and blades. Mixing blades are designed in parallelogram structure(patented), which can be turned 180° for reuse to increase service life. Specialized discharge scraper has been designed according to discharge speed in order to increase productivity.



### 5. Discharging Device

According to the different demands of customers, the discharging door can be opened by hydraulic, pneumatic or by hands. The number of the discharging door is three at most. And there is special sealing device on the discharging door to ensure the sealing reliable.



### 6. Hydraulic Power Unit

A special designed hydraulic power unit is used to provide power for more than one discharging gates. On emergency, these discharging gates can be opened by hand.



### 7. Maintaining Door & Security device

In order to improve the security of using the product, reliable high-sensitive security switches are used in the maintaining door to make the maintaining work safe and convenient.



### 8. Water Device

Overhead structure is used to water (patent products). It solves the problem of residual additive and water in pipe. Avoid the customer loss in formula changing. The nozzle which adopts spiral solid cone nozzle, has a fine uniform-atomization effect, large covering area and make the material more uniform mixing.

Item	BMP50	BMP100	BMP150	BMP250	BMP330	BMP500	BMP750	BMP1000
Output Capacity	50 L	100 L	150 L	250 L	330 L	500 L	750 L	1000 L
Input Capacity	75 L	150 L	225 L	375 L	500 L	750 L	1125 L	1500 L
Output Weight	120 Kg	240 Kg	360 Kg	600 Kg	800 Kg	1200 Kg	1800 Kg	2400 Kg
Mixing Power	3 KW	5.5 KW	7.5 KW	11 KW	15 KW	18.5 KW	30 KW	37 KW
Discharging Power	Pneumatic Unloading ( Optional Hydraulic Cylinder Material )							
Mixing Device	1/2	1/2	1/2	1/2	1/2	1/2	1/3	2/4
Paddle	1	1	1	1	1	1	1	1
Discharging Paddle	1	1	1	1	1	1	1	1
Weight	700 Kg	1100 Kg	1300 Kg	1500 Kg	2000 Kg	2400 Kg	3900 Kg	6200 Kg
Lifting Power	-	2.2 KW	2.2 KW	3 KW	4 KW	4 KW	7.5 KW	11 KW
Dimension L x W x H	950 x 790 x 1200 mm	1670 x 1460 x 1450 mm	1670 x 1460 x 1620 mm	1860 x 1650 x 1780 mm	1870 x 1870 x 1855 mm	2230 x 2080 x 1880 mm	2580 x 2340 x 2195 mm	2890 x 2602 x 2220 mm

Item	BMP1250	BMP1500	BMP2000	BMP2500	BMP3000	BMP4000	BMP4500	BMP5000
Output Capacity	1250 L	1500 L	2000 L	2500 L	3000 L	4000 L	4500 L	5000 L
Input Capacity	1875 L	2250 L	3000 L	3750 L	4500 L	6000 L	6750 L	7500 L
Output Weight	3000 Kg	3600 Kg	4800 Kg	6000 Kg	7200 Kg	9600 Kg	10800 Kg	12000 Kg
Mixing Power	45 KW	55 KW	75 KW	90 KW	110 KW	160 KW	200 KW	250 KW
Discharging Power	3 KW	3 KW	4 KW	4 KW	4 KW	4 KW	4 KW	4 KW
Mixing Device	2/4	2/4	3/6	3/6	3/9	3/9	3/9	3/9
Paddle	1	1	1	1	1	1	1	1
Discharging Paddle	1	1	1	1	1	1	1	1
Weight	6700 Kg	7700 Kg	9500 Kg	11000 Kg	12000 Kg	16500 Kg	17500 Kg	18500 Kg
Lifting Power	15 KW	15 KW	22 KW	30 KW	37 KW	-	-	-
Dimension L x W x H	3060 x 2760 x 2305 mm	3230 x 2902 x 2470 mm	3265 x 3230 x 2630 mm	3900 x 3550 x 2695 mm	3900 x 3550 x 2975 mm	4560 x 4150 x 3105 mm	4560 x 4510 x 3305 mm	4560 x 4510 x 3305 mm

# MIXER CONFIGURATION

TYPE : **BMPS SERIES**

- Advanced Technology
- High Durability
- Heavy Duty Product



Stirring Method 1



Stirring Method 2

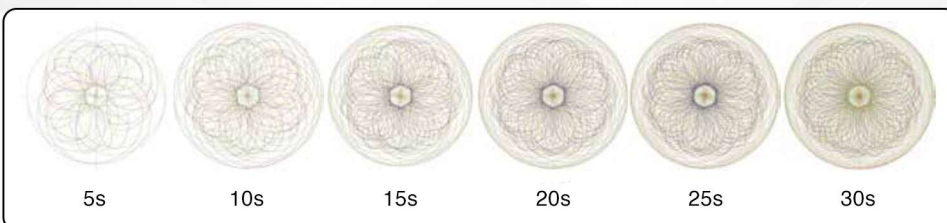


## 1. Mixing Device

Mixing blades are designed in parallelogram structure(planted), which can be turned 180° for reuse to increase semice life. Specialized discharge scraper has been designed according to discharge speed in order to increase productivity.

## 2. Motion Track

The revolution and rotation speed of the blades have been extensively studied and tested to give the mixer a high output without causing the segregation of materials with different grain size and weight. The movement of the material inside the trough is smooth and continuous. As shown in the picture, the blades track covers the whole bottom of the trough after a cycle.



Item	BMPS100	BMPS150	BMPS250	BMPS330	BMPS500	BMPS750	BMPS1000
Output Capacity	100 L	150 L	250 L	330 L	500 L	750 L	1000 L
Output Weight	120 Kg	180 Kg	300 Kg	395 Kg	600 Kg	900 Kg	1200 Kg
Mixing Power	7.5 KW	11 KW	15 KW	18.5 KW	22 KW	37 KW	45 KW
Discharging Power	Pneumatic Unloading (Hydraulic Unloading Optional )						3 KW
Mixing Device	2	2	2	2	2	2	2
Main/Fly-Cutter Mixing Device	1/1	1/1	1/1	1/1	1/1	1/1	1/1
Paddle	1	1	1	1	1	1	1
Discharging Paddle	1	1	1	1	1	1	1
Weight	1400 Kg	1600 Kg	1800 Kg	2000 Kg	2500 Kg	4700 Kg	6200 Kg
Lifting Power	2.2 KW	2.2 KW	3 KW	4 KW	4 KW	7.5 KW	11 KW
Dimension L x W x H	1664 x 1453 x 1487 mm	1664 x 1453 x 1712 mm	1856 x 1648 x 1817 mm	1862 x 1850 x 1895 mm	2220 x 2071 x 1935 mm	2581 x 2336 x 2245 mm	2891 x 2602 x 2237 mm

Item	BMPS1250	BMPS1500	BMPS2000	BMPS2500	BMPS3000	BMPS4000	BMPS4500
Output Capacity	1250 L	1500 L	2000 L	2500 L	3000 Kg	4000 L	4500 L
Output Weight	1500 Kg	1800 Kg	2400 Kg	3000 Kg	3600 Kg	4800 Kg	5400 Kg
Mixing Power	55 KW	75 KW	90 KW	110 KW	132 KW	200 KW	250 KW
Discharging Power	3 KW	3 KW	4 KW	4 KW	4 KW	4 KW	4 KW
Mixing Device	2	2	3	3	3	3	3
Main/Fly-Cutter Mixing Device	1/1	1/1	2/1	2/1	2/1	2/1	2/1
Paddle	1	1	1	1	1	1	1
Discharging Paddle	1	1	2	2	2	2	2
Weight	7000 Kg	8000 Kg	9000 Kg	12000 Kg	12000 Kg	17500 Kg	19000 Kg
Lifting Power	15 KW	15 KW	22 KW	37 KW	37 KW	7.5 KW	11 KW
Dimension L x W x H	3058 x 2756 x 2395 mm	3223 x 2902 x 2470 mm	3265 x 3230 x 2695 mm	3893 x 3550 x 2875 mm	3893 x 3550 x 3085 mm	4594 x 4150 x 3249 mm	4594 x 4150 x 3634 mm

# MIXER CONFIGURATION

TYPE : **BMPH SERIES**

- Advanced Technology 
- High Durability 
- Heavy Duty Product 



Item	BMPH330	BMPH500	BMPH750	BMPH1000	BMPH1500	BMPH2000
Input Capacity	550 L	750 L	1125 L	1500 L	2250 Kg	3000 L
Output Capacity	330 L	500 L	750 L	1000 L	1500 L	2000 L
Mixing Power	22/30 KW	30/37 KW	37/45 KW	45/55 KW	55/75 KW	75/90 KW
Mixing Device	1/2	1/2	1/3	2/4	2/4	3/6
Puddle	1	1	1	1	1	1
Discharging Paddle	1	1	1	1	1	2



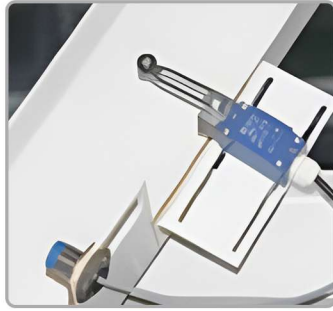
## 1. Skip Hoist & Weighing System

Planetary mixer equipped with skip hoist and weighing system. The inlet will open and close automatically when skip hoist lift to the inlet or descend (Patent), preventing dust from coming out of mixer to a result of Environmental. Cement scale and water scale (Include precision measurement) are designed very reasonably. Weighing is more accurate.



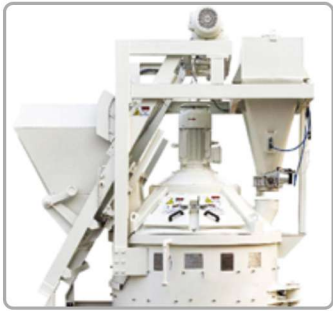
## 2. Environment-Friendly anti-block Feeding Device

Specially designed environment-friendly anti-block feeding device (patented). The design of outer slide rail prevents the inlet gate from blocking and leads to better sealing.



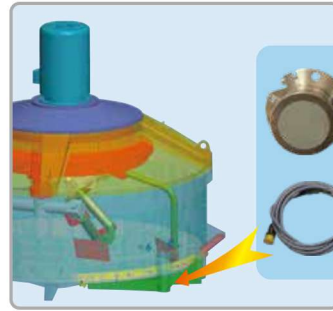
**3. Security Device of Skip Hopper**

Heavy Duty BITLER BMPH Mixer configuration is also equipped with a safety device to protect the skip hopper from head impacts when the hopper climbing Up



**4. High Pressure Washing**

Automatic high-pressure cleaning system, the use of rotating high-pressure nozzle within a few minutes, stirring drum wall, mixing tools, the mixing tube to cover thoroughly cleaned. Greatly improve the cleaning effect, reducing cleaning time, reduce labor intensity and improve the working environment.



**5. Temperature and Moisture Sensor**

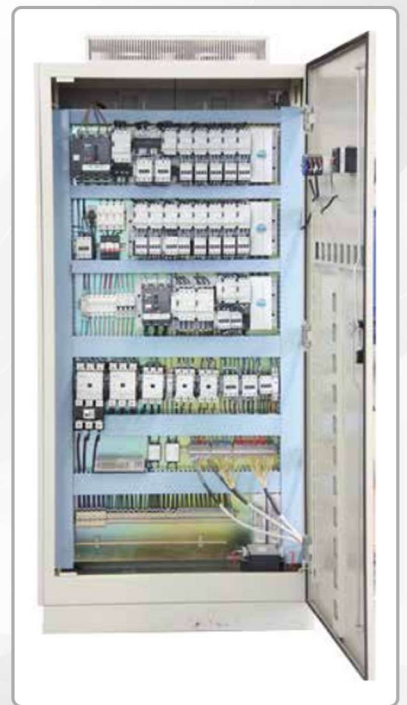
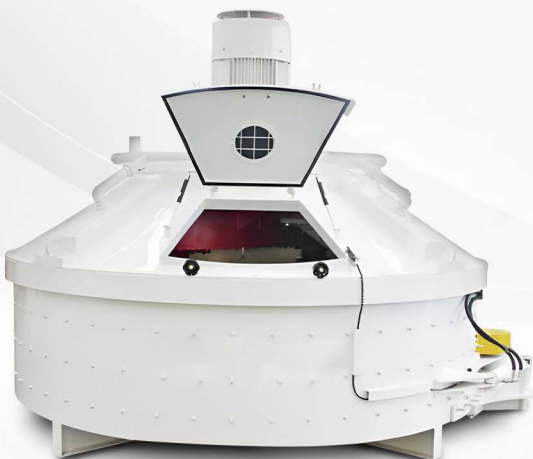
High precision and dynamical measuring supplies accurate value of temperature and moisture, which can achieve better performance of the mixture.

**Control System**

We provide two modes of control system. The first mode consists of industrial computer, weighers, control cabinet and high voltage cabinet. The second mode is made up of PLC, touch screen, weighers, and control cabinet. Both modes adopts man-machine interface, menu options, full automatic control of material ratio. Multiply display of different working process makes it easy to monitor and manage production. Easy operation owes to the beautiful outline design and humanized control method.

All electrical components are from famous foreign brands to ensure the stability of the system. The control system has a wide application. Each weigher signal collected by independent weighing instrument, transferred by serial communications to specialize computer control board collecting external digital signals and realizes automatic production. High precision, strong anti-jamming capability. Besides, customized services are provided.

**2 CONTROL SYSTEM**



# RIBBON MIXER

TYPE : BRM SERIES

- ▶ Advanced Technology
- ▶ High Durability
- ▶ Heavy Duty Product



The outer helix combined with rotation direction drive material from two ends of vessel to center; while the inner helix drive material from center to both ends. The vortex 'structure of outer helix combined with rotation of main shaft drive material to discharge outlet guaranteeing no dead corner.



High Durability

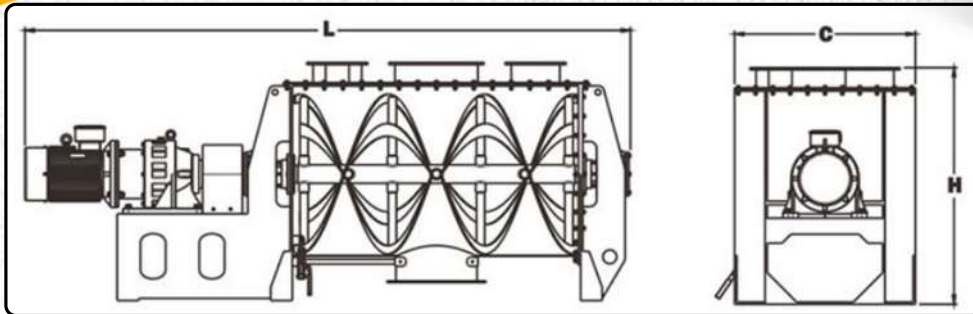


Best Technology

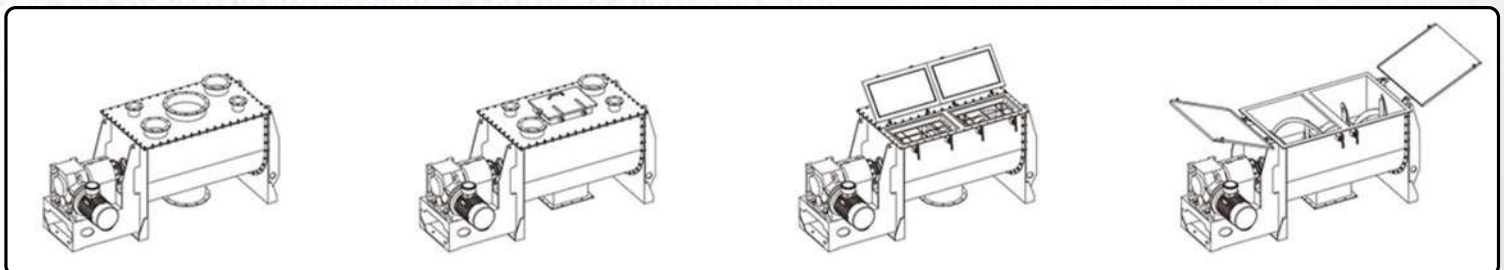


BRM horizontal ribbon mixer is widely used in Chemical, pharmaceutical, food and construction line, It can be used to mix different powders, powder with small amount of liquid, and powder with granule.





- Best mixing homogeneity
- Shortest mixing time
- Low failure rate
- High mixing efficiency
- Repeated batch mixing



Specification	BRM-0.3	BRM-0.5	BRM-1	BRM-2	BRM-3	BRM-4	BRM-5	BRM-6	BRM-8	BRM-10	BRM-15	BRM-20	BRM-30
Working Capacity (M <sup>3</sup> )	0.18	0.3	0.6	1.2	1.8	2.4	3	3.6	4.8	6	9	12	18
Working Capacity (Kg)	200	300	600	1200	1800	2500	3000	3600	4800	6000	9000	12000	15000
Speed (R/min)	62	62	49	33	33	27	27	27	22	22	14	14	12
Power (KW)	5.5	7.5	11	15	18.5	22	30	37	45	55	75	90	110
Weight (Kg)	600	900	1200	2000	2500	3500	4000	4500	5000	6000	7500	10500	13000
L	2280	2670	3140	3860	4460	4950	5280	5530	5100	5610	5820	6300	7000
C	680	780	980	1200	1300	1400	1550	1560	1720	1750	2000	2350	2600
H	880	1240	1400	1650	1700	2000	2100	2200	2500	2650	2900	3160	3350

# INDOTARA®

## PT. INDOTARA PERSADA

### Our Marketing Office and After Sales Service Center

#### Head Office

50/F, Menara BCA Grand Indonesia  
Jl. M.H. Thamrin No.1  
Jakarta Pusat 10310  
021 - 5011 2228  
dgm@indotara.id



#### Semarang Office

Wisma HSBC Lt. 6 Suite 609  
Jl. Gajah Mada No.135  
Semarang, Jawa Tengah 50134  
024 - 40 300 893  
smg.dgm@indotara.id



#### Marketing Office

APL Tower 6th Floor No. 6 Central Park,  
Jl. Letjen S. Parman Kav 28,  
Jakarta Barat - 11440  
021 - 5011 2228  
dgm@indotara.id



#### Medan Office

Sutomo Tower Lantai 5H  
Jl. Sutomo Ujung No.28,  
Kota Medan, Sumatera Utara 20235  
061 - 50 300 595  
mdn.dgm@indotara.id



#### Graha Indotara

Millenium Industrial Estate  
Jl. Millenium 22 Blok R3 No. 1  
Cikupa, Tangerang - Banten 15720  
021 - 5011 2228  
dgm@indotara.id



#### Makassar Office

Fajar Graha Pena Lt. 5  
Jl. Urip Sumoharjo No. 20,  
Makassar - South Sulawesi 90234  
021 - 5011 2228  
mks.dgm@indotara.id



#### Bandung Office

Wisma HSBC Lt. 6 Suite B  
Jl. Asia Afrika No. 116  
Bandung, Jawa Barat 40112  
021 - 5011 2228  
bdg.dgm@indotara.id



#### Balikpapan Office

Panin Tower Lt. 8 - Grand Sudirman  
Jl. Jendral Sudirman No.7 Klandasan Ilir,  
Balikpapan Kota, Kalimantan Timur 76114  
021 - 5011 2228  
bpp.dgm@indotara.id



#### Surabaya Office

Japfa Indoland Center, Tower I Lt. 10/1008  
Jl. Jendral Basuki Rahmat 129-137  
Surabaya 60271  
031 - 3360 1491  
sby.dgm@indotara.id



#### Bali Office

Benoa Square Lt. 2  
Jl. Bypass Ngurah Rai No. 21 A Kedonganan,  
Kuta Badung - Bali Indonesia 80361  
021 - 5011 2228  
bali.dgm@indotara.id



#### Yogyakarta Office

Hartono Mall Yogyakarta Lt. 3  
Kaliwaru, Condongcatur,  
Sleman, Yogyakarta 55281  
021 - 5011 2228  
yog.dgm@indotara.id



#### Singapore Office

Marina Bay Financial Centre Tower 3  
17F, 12 Marina Boulevard  
Singapore - 018982  
021 - 5011 2228  
sing.dgm@indotara.id

